

LONKING GROUP (CHINA) COMPANY LIMITED

IP65
LED Tri-Proof Light

NEW

IP65



0.6m/0.9m/1.2m/1.5m For You Choose



IP65 LED Tri-Proof Light

Products advantages:

1. 2835 SMD LEDs Epistar LED chip high brightness lower light decay safety working current to ensure long life span of LED. LM-80certified.
2. Driver is specially for LED lights AC / DC power supply high power factor suitable for global AC voltage. Products with overload protection output short circuit protection output overvoltage protection. Products with elegant appearance smart and small size high efficiency and low noise Primary and secondary driver are isolated high isolation voltage to ensure safety use.
3. 6063 aerospace aluminum thermal performance small wear-resisting property more energy efficient.
4. Waterproof Explosion-proof Dust-proof.

PL30W-U60

Description:

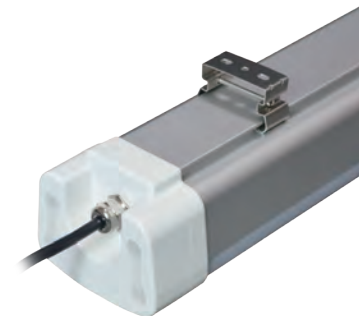
Model No.	L-PL30W-U60
Actual Size	600x90x74mm
LED Source	168PCS SMD LED 2835
Power	30W
Color Temp	Warm White: 2800-3500K Neutral White: 4000-4500K Daylight White: 5000-5500K Pure White: 6000-6500K Cool White: 6500-7000K
Luminous (lm)	3000 ± 10%LM
Lighting effect	>100LM/W
CRI	80-85Ra
P.F	>0.95
Input Voltage	AC85-265V 50/60Hz
Output Voltage	DC30-40V
Work Temp	-20~80°C
Main Material	Aluminum housing , PC cover
Frame color	White, sliver
Lifespan	More than 35000H
Warranty	3Year
Certification	TUV、ROHS、CE、CB、FCC



PL40W-U90

Description:

Model No.	L-PL40W-U90
Actual Size	900x90x74mm
LED Source	228PCS SMD LED 2835
Power	40W
Color Temp	Warm White: 2800-3500K Neutral White: 4000-4500K Daylight White: 5000-5500K Pure White: 6000-6500K Cool White: 6500-7000K
Luminous (lm)	4000 ± 10%LM
Lighting effect	>100LM/W
CRI	80-85Ra
P.F	>0.95
Input Voltage	AC85-265V 50/60Hz
Output Voltage	DC30-40V
Work Temp	-20~80°C
Main Material	Aluminum housing , PC cover
Frame color	White, sliver
Lifespan	More than 35000H
Warranty	3Year
Certification	TUV、ROHS、CE、CB、FCC



IP65

LED Tri-Proof Light U series

PL48W-U120

Description:

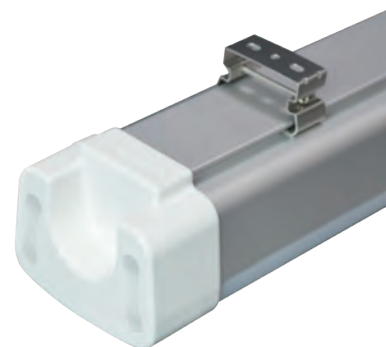
Model No.	L-PL48W-U120
Actual Size	1200x90x74mm
LED Source	288PCS SMD LED 2835
Power	48W
Color Temp	Warm White: 2800-3500K Neutral White: 4000-4500K Daylight White: 5000-5500K Pure White: 6000-6500K Cool White: 6500-7000K
Luminous (lm)	4800 ± 10%LM
Lighting effect	>100LM/W
CRI	80-85Ra
P.F	>0.95
Input Voltage	AC85-265V 50/60Hz
Output Voltage	DC30-40V
Work Temp	-20~80°C
Main Material	Aluminum housing , PC cover
Frame color	White, sliver
Lifespan	More than 35000H
Warranty	3Year
Certification	TUV、ROHS、CE、CB、FCC



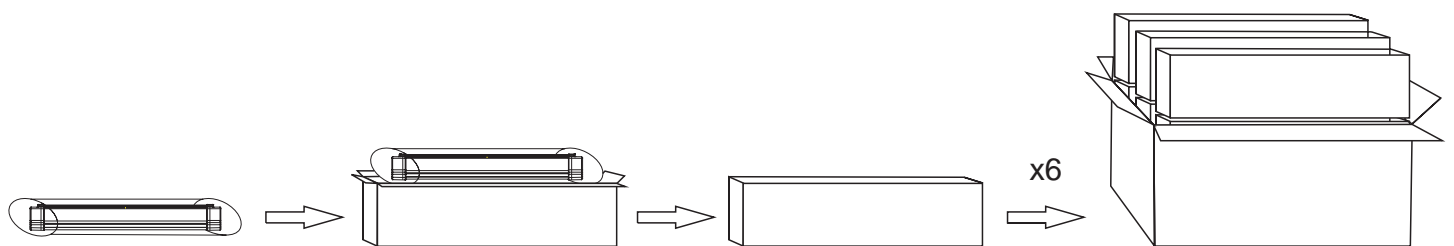
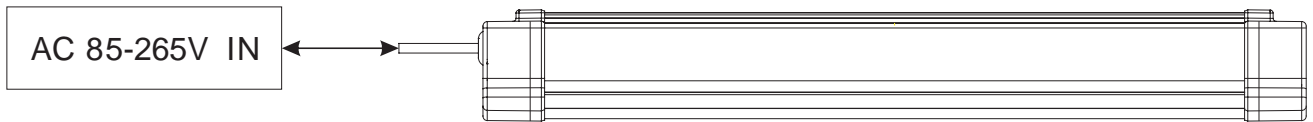
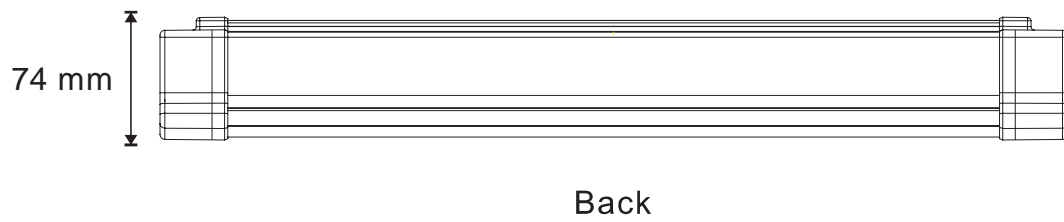
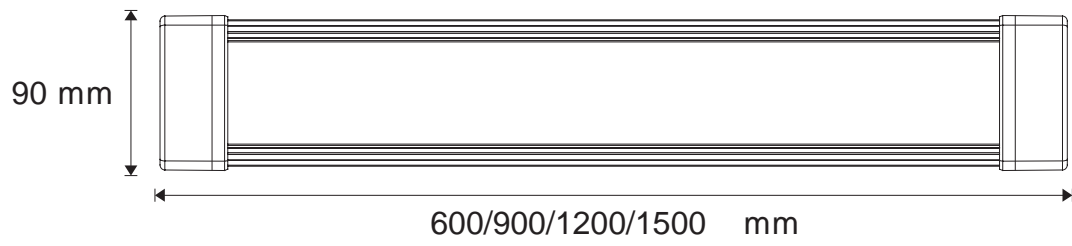
PL60W-U150

Description:

Model No.	L-PL60W-U150
Actual Size	1500x90x74mm
LED Source	336PCS SMD LED 2835
Power	60W
Color Temp	Warm White: 2800-3500K Neutral White: 4000-4500K Daylight White: 5000-5500K Pure White: 6000-6500K Cool White: 6500-7000K
Luminous (lm)	6000 ± 10%LM
Lighting effect	>100LM/W
CRI	80-85Ra
P.F	>0.95
Input Voltage	AC85-265V 50/60Hz
Output Voltage	DC30-40V
Work Temp	-20~80°C
Main Material	Aluminum housing , PC cover
Frame color	White, sliver
Lifespan	More than 35000H
Warranty	3Year
Certification	TUV、ROHS、CE、CB、FCC



IP65
LED Tri-Proof Light U series

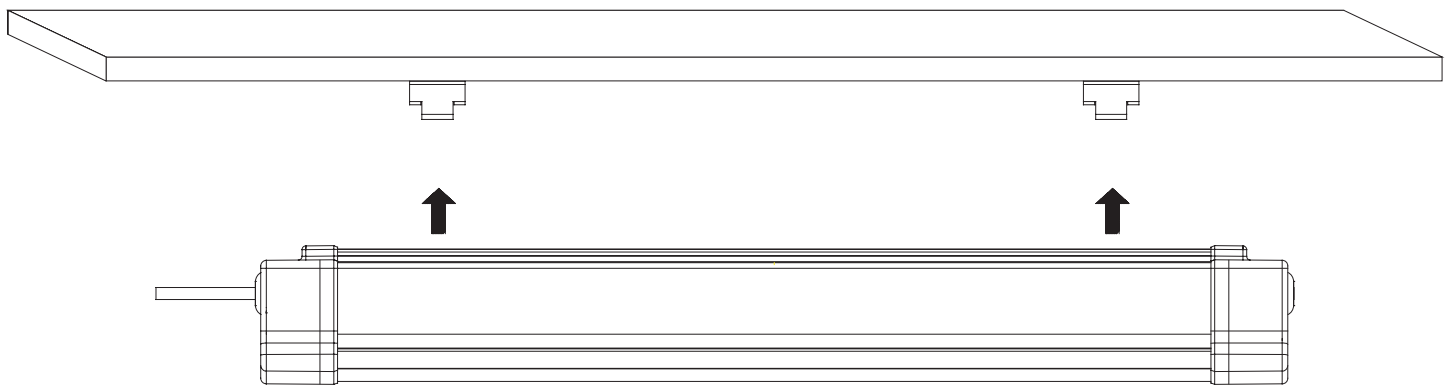


Installation Instructions

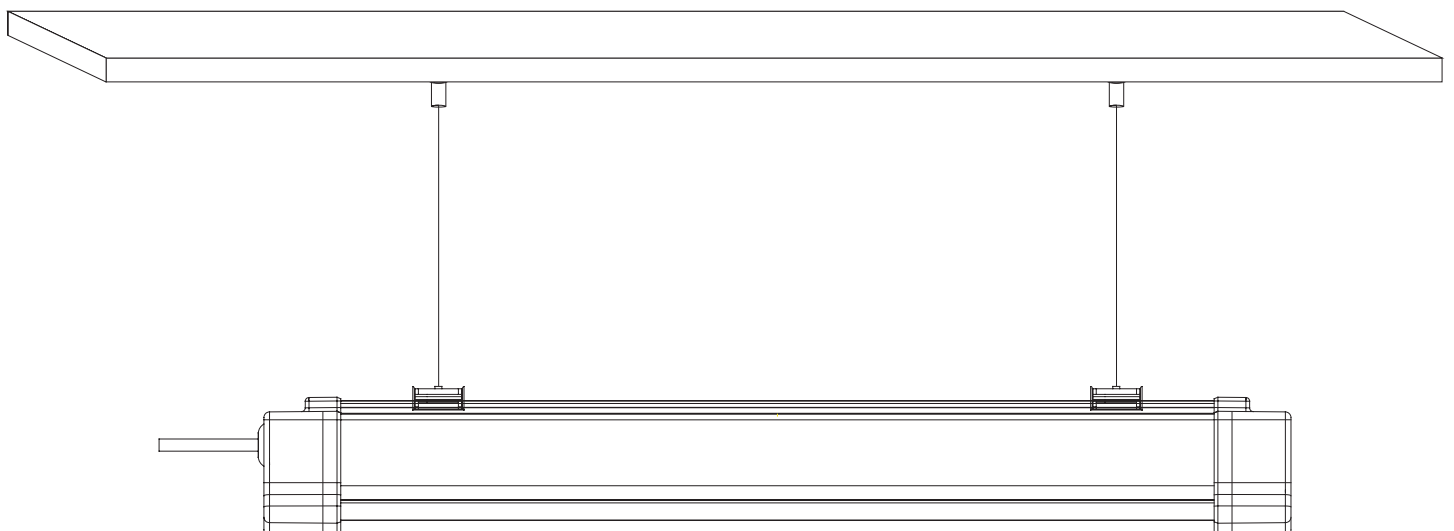
Install The Matters Needing Attention

1. Only professional electrician can install the lamp.
2. Check the lamp very carefully before installation.
3. Install the lamp follow up the installation procedure make sure all parts safe.
4. Please request after service if trouble or doubt.

Ceiling style



Pendant style



IP65

LED Tri-Proof Light U series

Application Scenarios

1. Conference/Meeting rooms Classrooms
2. Offices Hospitals Factories
3. Hotels Offices or other Commercial Complexes
4. Residential/Institution Buildings
5. Places where energy saving and high color rendering index are needed

