

B SERIES LED TRI-PROOF LIGHT IP65

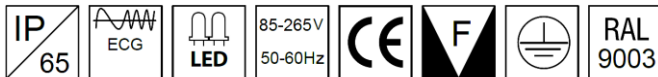
Mode: LG-TPL20W-B60/LG-TPL40W-B120/LG-TPL60W-B150

LED LIGHT SOURCE

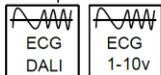


www.lightinnovate.com

STANDARD



on request



DESCRIPTION

MOUNTING

Suspended / Surface Mounted

LIGHT SOURCE

LED

OPTICAL SYSTEM

Optics special designed by Mareli Ltd.

for achieving excellence light distribution characteristics

MATERIALS

Housing: sheet steel

Optic 1: Metallized Optical PMMA (Class B)

Optic 2: Transparent Polycarbonate with Patterns

WIRING

Electronic control gear Philips

On request:

dimnable electronic control gear

(DALI, 1-10V)

LIGHT DISTRIBUTION

Direct

SURFACE FINISH

Housing: white color (RAL9003); other colors on request

ACCESSORIES

On request: Single suspensions



Emergency Mode

On request, 30% brightness, 3 hours back-up

Areas of application



B SERIES LED TRI-PROOF LIGHT IP65

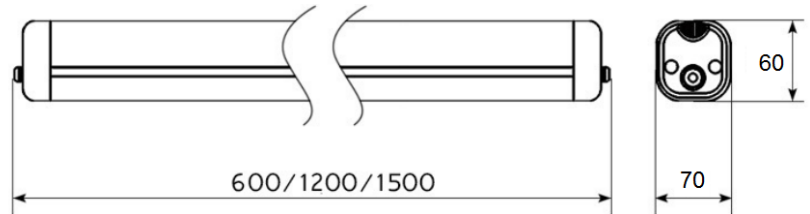
Mode:LG-TPL20W-B60/LG-TPL40W-B120/LG-TPL60W-B150

LED LIGHT SOURCE



www.lightinnovate.com

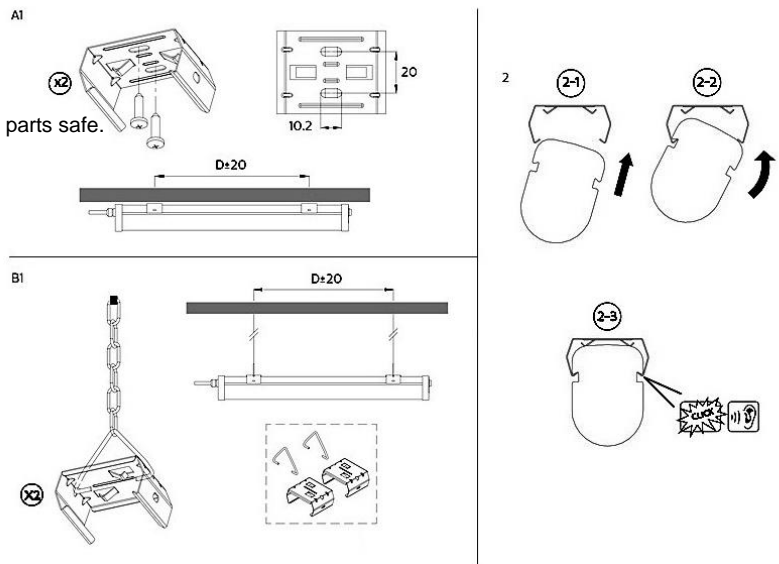
SIZE



INSTALLATION DRAWING

Install The Matters Needing Attention

1. Only professional electrician can install the lamp.
2. Check the lamp very carefully before installation.
3. Install the lamp follow up the installation procedure, make sure all parts safe.
4. Please request after service if trouble or doubt.



COLOR TEMPERATURE

Warm White : 2800-3500K

Neutral White:4000-4500K

Daylight White:5000-5500K

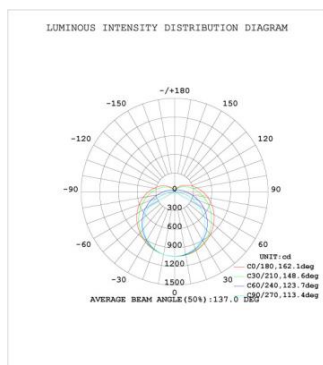
Pure White: 6000-6500K

Cool White : 6500-7000K

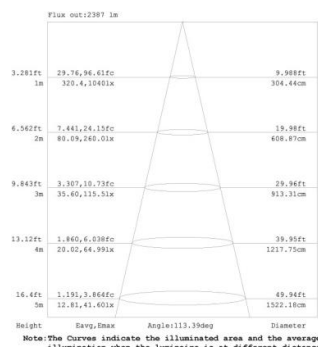
SPECIFICATION

NO.	Model	LED	Watt	Voltage(V)	Lumen(lm)	CRI	Power factor	Size(mm)
1	LG-TPL20W-B60	SMD	20W	100~240	2000	≥ 80	≥ 0.95	600*70*60
2	LG-TPL40W-B120	SMD	40W	100~240	4000	≥ 80	≥ 0.95	1200*70*60
3	LG-TPL60W-B150	SMD	60W	100~240	6000	≥ 80	≥ 0.95	1500*70*60

Light Distribution Curve:



Illuminance Diagram:



B SERIES LED TRI-PROOF LIGHT IP65

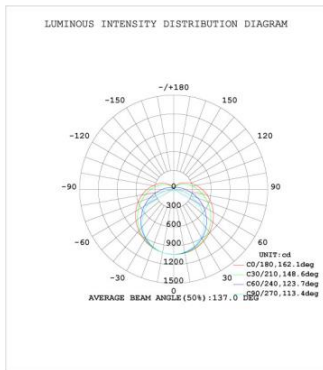
Mode:LG-TPL20W-B60/LG-TPL40W-B120/LG-TPL60W-B150

LED LIGHT SOURCE

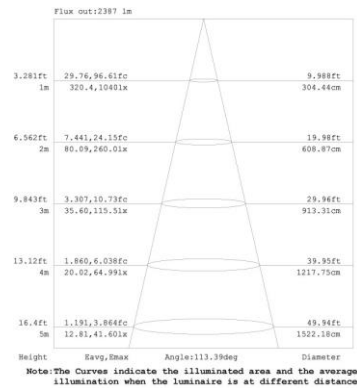


www.lightinnovate.com

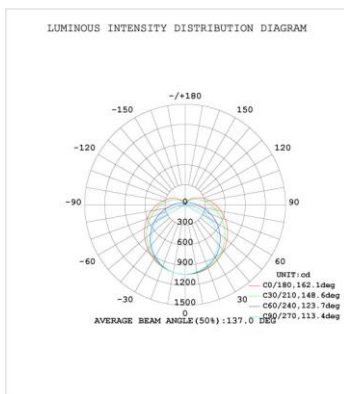
Light Distribution Curve:



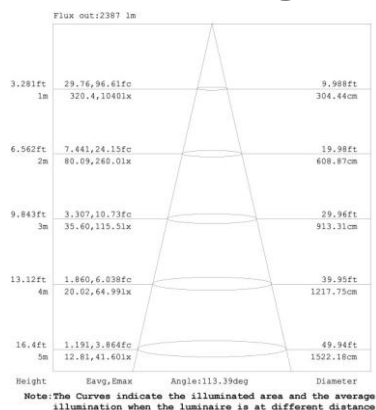
Illuminance Diagram:



Light Distribution Curve:



Illuminance Diagram:



Products advantages

1. 2835 SMD LEDs, Epistar LED chip, high brightness, lower light decay, safety working current to ensure long life span of LED. LM-80certified.
2. Driver is specially for LED lights, AC / DC power supply, high power factor, suitable for global AC voltage. Products with overload protection, output short circuit protection, output overvoltage protection. Products with elegant appearance, smart and small size, high efficiency and low noise. Primary and secondary driver are isolated, high isolation voltage to ensure safety use.
3. 6063 aerospace aluminum, thermal performance, small, wear-resisting property, more energy efficient.
4. Waterproof, Explosion-proof, Dust-proof.

REMARK

Mareli Ltd. reserves the right to introduce structural changes and modify the luminaires

Luminous flux and connected electrical load are subject to an initial tolerance of +/- 5%. Tolerance of color temperature: +/-150 K.

Unless stated otherwise, the values apply to an ambient temperature of 25° C.